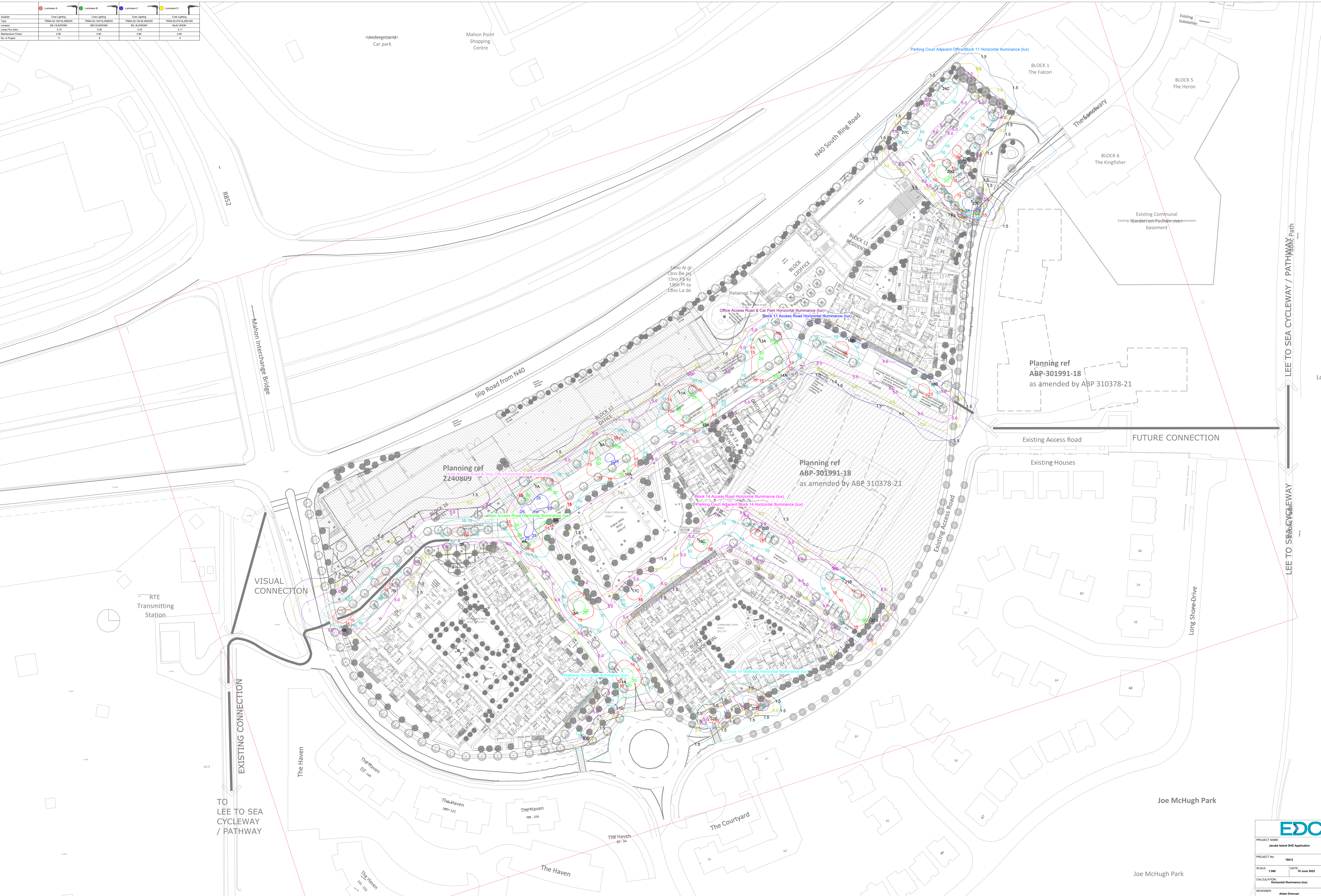


Quarter	Luminaire A	Luminaire B	Luminaire C	Luminaire D
Quarter	One Lighting	Two Lighting	Three Lighting	Four Lighting
Type	TRM-A-02-100-W-3000K	TRM-A-02-100-W-3000K	TRM-A-02-100-W-3000K	TRM-A-02-100-W-3000K
Lamp(s)	2x 18W LED	2x 18W LED	2x 18W LED	2x 18W LED
Light Flux (lm)	674	674	674	674
Mounting Height	6.0m	6.0m	6.0m	6.0m
No. of Fixtures	11	4	9	4



Results Grid 1	Results Main Access Road	Results Block 11 Access Road	Results Office Access Road & Car Park	Results Block 14 Access Road	Results Block 17 Access Road	Results Block 14 Access Road	Results Block 14 Walkway	Results Block 14 Walkway
Emv	11.06	11.52	7.87	10.44	7.95	11.52	7.95	7.95
Emm	1.86	2.48	2.04	3.88	2.97	3.43	3.53	2.25
Emax	13.93	29.37	17.30	26.62	22.93	35.44	12.15	18.20
Emm/Emax	0.05	0.09	0.12	0.15	0.13	0.09	0.29	0.12
Emm/Emv	0.17	0.22	0.26	0.25	0.37	0.26	0.33	0.27

EDC

PROJECT NAME: Jacobs Island SHD Application

PROJECT No: 18912

SCALE: 1:500 DATE: 10 June 2022

CALCULATION: Horizontal Illuminance (lux)

DESIGNER: Aidan Brennan

PREPARED BY: EDC-Mechanical & Electrical Consulting Engineers
 Engineer Aidan Brennan
 CAD Operator: EDC-Mechanical & Electrical Consulting Engineers
 CAD Office Tel: +353(0)21 4282476
 Dublin Office Tel: +353(0)1 4282476
 London Office Tel: +44 (0)2030000602
 www.edceng.com